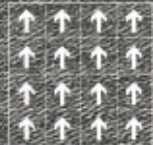




LAGOM 226



LAGOM 226004-Monolithic
IN STOCK 现货



LAGOM 226001-02-11-Monolithic

5 : 3 : 2
IN STOCK 现货

OPEN THE DOOR C



LAGOM 226001-02-04-Monolithic
1:2:1
IN STOCK 现货



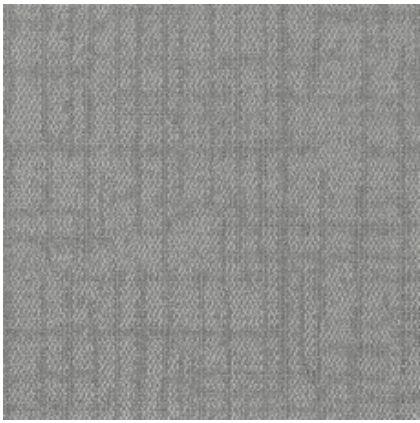


LAGOM 226003-13-Monolithic
IN STOCK 现货



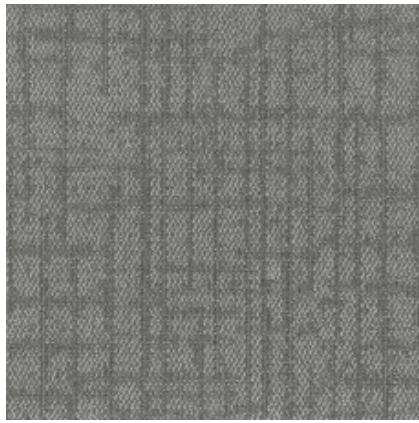
LAGOM 226001-02-03-04-Monolithic

IN STOCK 现货



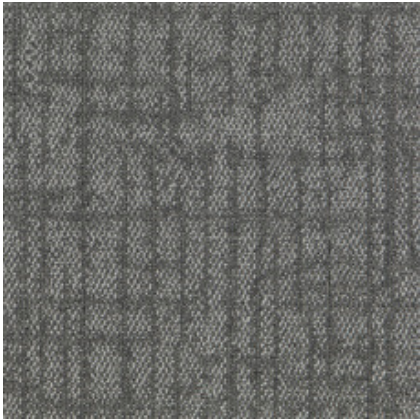
▲ IN STOCK 现货

LAGOM 226001



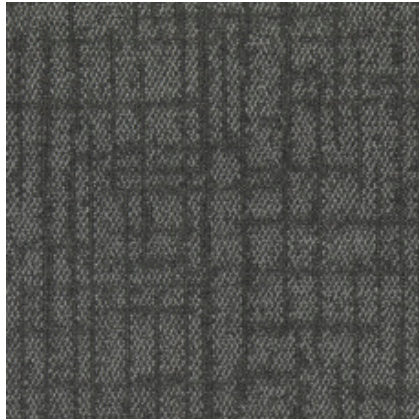
▲ IN STOCK 现货

LAGOM 226002



▲ IN STOCK 现货

LAGOM 226003



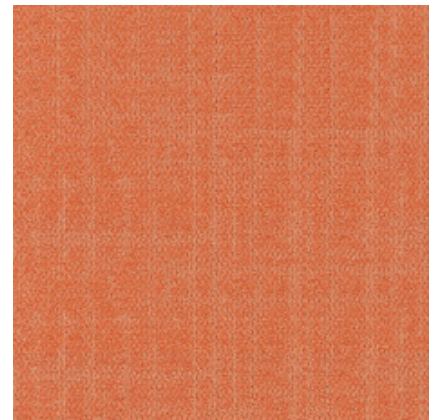
▲ IN STOCK 现货

LAGOM 226004



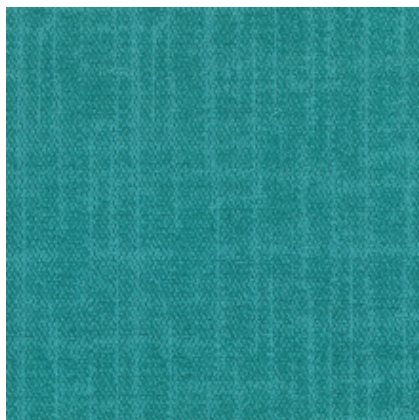
▲ IN STOCK 现货

LAGOM 226011



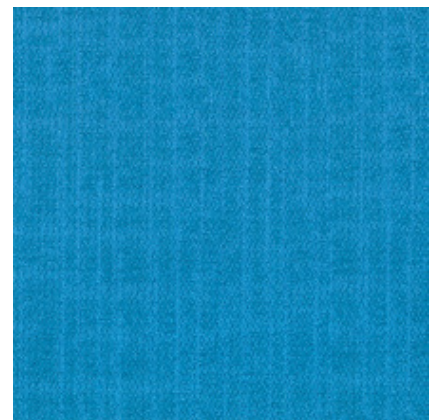
▲ IN STOCK 现货

LAGOM 226012



▲ IN STOCK 现货

LAGOM 226013



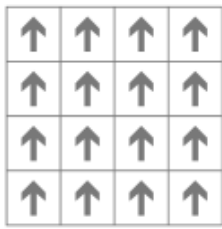
▲ IN STOCK 现货

LAGOM 226014

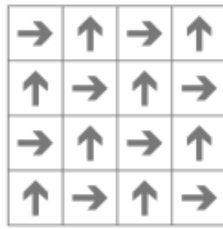
Specification 技术指标

Product Name 产品名称	LAGOM 226
Product Code 产品编码	LAGOM 226
Tufted construction 簇绒结构	Multi-level Loop 高低圈绒
Fiber 纱线	100% Synthetic Fibre 100% 合成纤维
Dye method 染色工艺	Solution Dyed 原液染色
Gauge 针距	1/12
Tufted weight(g/m ²) 绒重(克/平方米)	560±5%
Tile size(mm) 地毯尺寸(毫米)	500 x 500
Pile height(mm) 平均绒高(毫米)	4.0 ± 0.5
Total thickness(mm) 总厚度(毫米)	6.5 ± 0.5
Standard Backing 标准底背	Glass fiber reinforced PVC

Recommended installation methods 建议铺装方式



Monolithic
顺铺



Quarter-turn
对角铺

 Anti-fouling	 Anti-static	 Environmental	 Passed various tests	 Fashion colors	 100%B,C,F Yarn
 Reduced Flammability	 Isolation acoustic	 Colorfast	 Chair roulettes	 No zippering	 Wear resistance
 Soil Resistance	 Wear Warranties	 Dimensional Stability	 Long life-span	 Easy to transport	 Non-moid